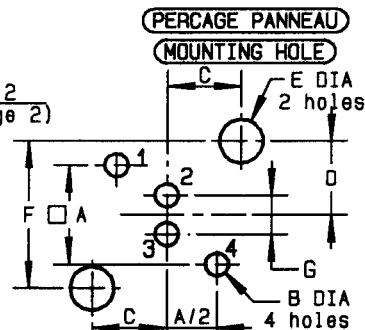
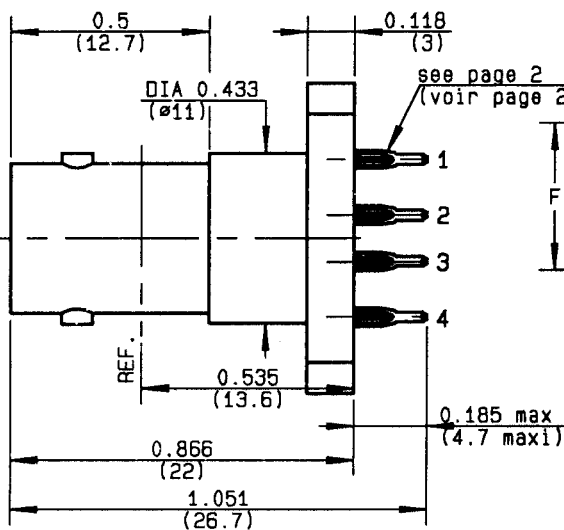
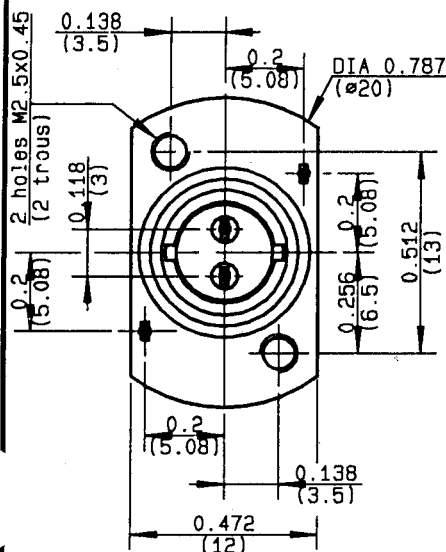


**STRAIGHT MALE RECEPTACLE FOR P.C.B
WITH PRESS-FIT TERMINATION**

R605.416.020

SERIES

BR2



	MM		INCH	
	maxi	mini	maxi	mini
A	10.21	10.11	0.402	0.398
B	1.09	0.94	0.043	0.037
C	3.55	3.45	0.140	0.136
D	6.55	6.45	0.258	0.254
E	2.8	2.7	0.110	0.106
F	13.05	12.95	0.514	0.510
G	3.015	2.985	0.119	0.117

NOMINAL IMPEDANCE	50 Ω
FREQUENCY RANGE	0-0.5 GHz
TEMPERATURE RATING	-40/+85 °C
V.S.W.R	NA + x F(GHz)Maxi
RF INSERTION LOSS	NA \sqrt{F} (GHz) dB Maxi
VOLTAGE RATING	500 Veff Maxi
DIELECTRIC WITHSTANDING VOLTAGE	1500 Veff Mini
INSULATION RESISTANCE	5000 M Ω Mini
HERMETIC SEAL	Atm.cm ³ /s
PACKAGE (pressurized only)	MPa
MECHANICAL DURABILITY	Cycles
WEIGHT	gr
SPECIFICATION	

CABLES :

OTHERS CHARACTERISTICS

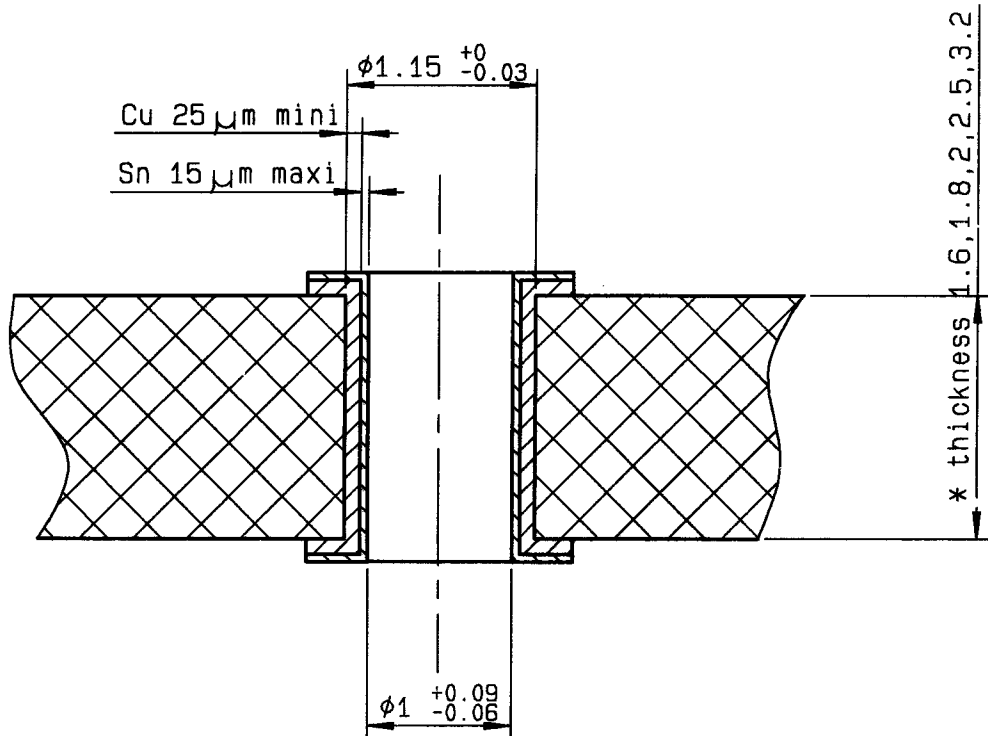
CABLE RETENTION	N Mini
CENTER CONTACT RETENTION	
Axial force - mating end	18 N Mini
Axial force - opposite end	18 N Mini
Torque	NA cm.N Mini
RECOMMENDED TORQUES	
Mating	cm.N
Panel nut	cm.N
Clamp nut	cm.N

CONNECTOR PARTS	MATERIALS	FINISH	(all values are given in micrometers)
BODY	BRASS	NICKEL 2	
OUTER CONTACT			
CENTER CONTACT	BERYLLIUM COPPER	GOLD 1.3 OVER NICKEL 2	
INSULATOR	PBTB, POLYAMIDE	-	
GASKET		-	
OTHERS PIECES	PHOSPHOR BRONZE	TIN LEAD 3 OVER NICKEL 1-2	

ISSUE	CREATION DATE	FILE PART-NUMBER
9613A00	26-MAR-96	96-0106-022



PC BOARD MATERIAL	GLASS FIBRE EPOXYD NEMA:G10,G11,FR4,FR5 DIN 40802 : EP-GC 01 , EP-GC 02
THICKNESS	1.6 mm *
HOLE	FOR 1mm COMPLIANT PIN
BORE-HOLE	$\phi 1.15 \text{ } 0/-0.03$
COPPER	$> 25 \mu\text{m}$
TIN	$< 15 \mu\text{m}$
FINAL DIAMETER	$\phi 1 \text{ } +0.09/-0.06$

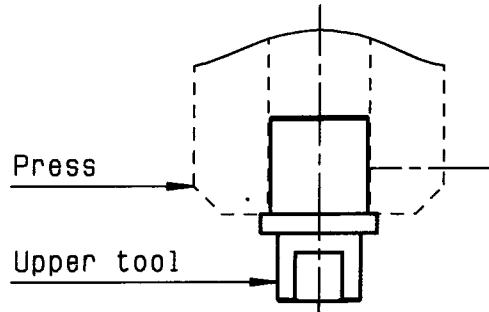


MOUNTING INSTRUCTIONS ON THE PCB
STRAIGHT CONNECTORS WITH PRESS-FIT TERMINATION

①

Slide the upper tool (R282.878.230) into the machine (press) .

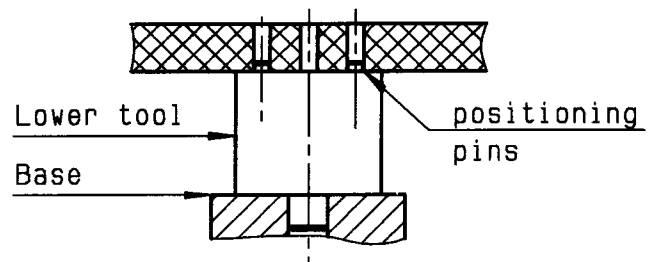
-
-
-



②

Slide the lower tool (R282.878.524) into the base and place correctly the PCB on this tool .(positioning pins)

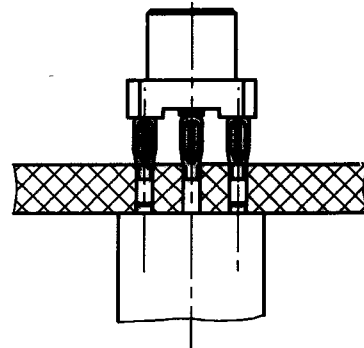
-
-
-



③

Place correctly the straight connector with press-fit termination on the PCB and introduce the press-fit extremity in the holes of the PCB .

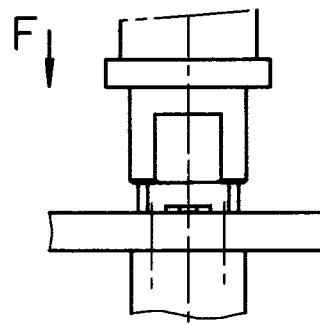
-
-
-



④

Push on the top (about 400 N) until total insertion .(in direction F)
(Push connector body until it bottoms against PCB) .

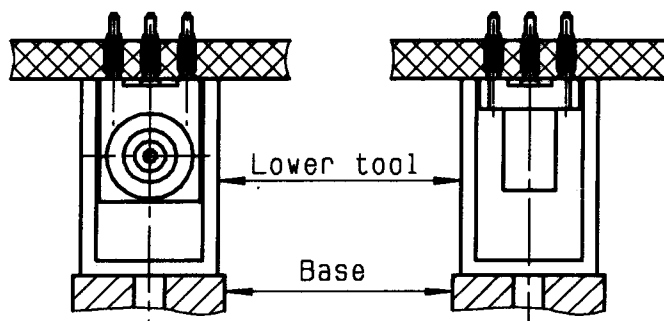
Remove the connector and the PCB assembly .



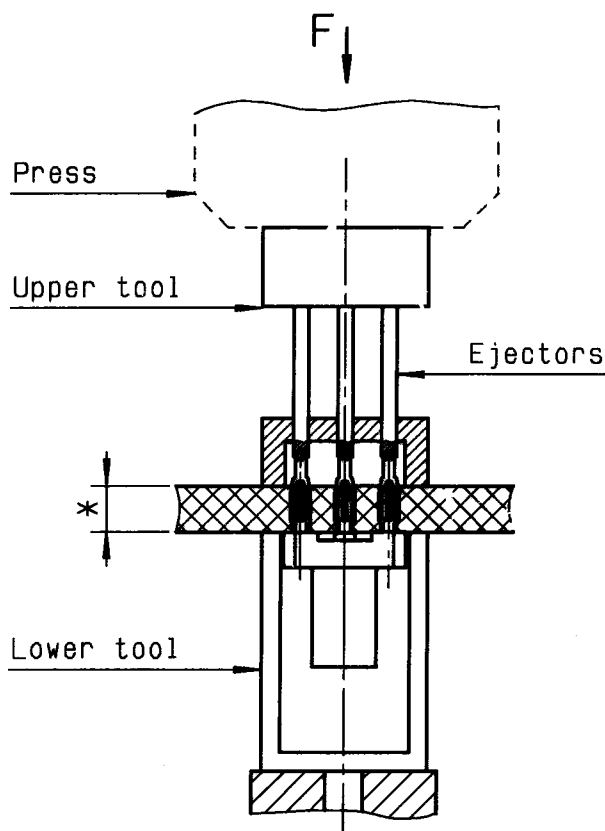
4112 001

REPLACEMENT INSTRUCTIONS ON THE PCB
STRAIGHT AND RIGHT ANGLE CONNECTORS WITH PRESS-FIT TERMINATION

① Place correctly the PCB and the connector on lower tool (R282.878.534)



② Place the upper tool (R282.878.515) at the back of the connector and place correctly the ejectors on Press-fit pins .



③ Press the back of the upper tool to remove the connector (about 400N) into the connector slide down onto lower tool .

④ **CAUTION !**
It's impossible to use a COAXIPRESS a twice .
A plated hole of the PCB can't be used over 3 times .
* panel thickness: 1.6 to 7 mm

4112 0211